

# CANDY CANE WINE COZY

Design by Tammy Canavan-Soldaat (Canadutch.nl)

## Gauge

30 stitches per 10cm in  
stockinette stitch with 3mm

## Measurements

Total length: 38cm  
Body width (flat): 10cm  
Neck ribbing = 12cm

## Pattern

Cast on 72 with Colour A  
Divide across four double pointed  
needles (18 sts each).

### Body

**Row 1:** Knit

**Row 2-5:** k2, p2 rib around

Work **Chart A** for the candy cane pattern until piece measures 23cm (or the point where your bottle neck starts to get narrower) completing chart to end, finishing row 7.

### Neck

Note: All k2tog decreases are worked with red yarn, you are decreasing to work away white stitches.

**Row 1:** k1 (red), k1 (white), k2tog, repeat to end

**Row 2-3:** k2 (red), k1 (white), repeat to end

**Row 4-5:** k1 (white), k2 (red), repeat to end

**Row 6-7:** k1 (red), \*k1 (white), k2 (red)\*, repeat \*...\* around, k1 (red)

**Row 8:** (worked all in red): k1, k2tog, repeat around

**Row 9:** Knit (all stitches should now be red).

Work **Chart B** for ribbing decreases.

Work k2, p2 rib in red for 12 cm. Cast off and weave in ends.

## Materials

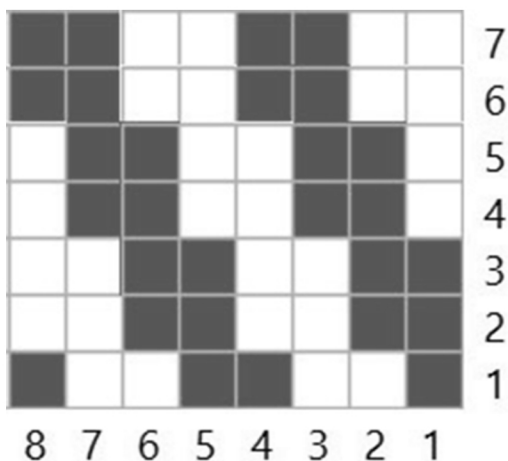
Scheepjes Invicta Extra in colours:  
Colour A = 1545 (Red)  
Colour B = 1357 (White)  
Size 3mm Double Pointed Needles  
Stitch Marker  
Needle to weave in ends  
Wine bottle

# CANDY CANE WINE COZY

Design by Tammy Canavan-Soldaat (Canadutch.nl)

Note: When working charts in the round, always start in the bottom right corner and work each row from right to left.

## CHART A



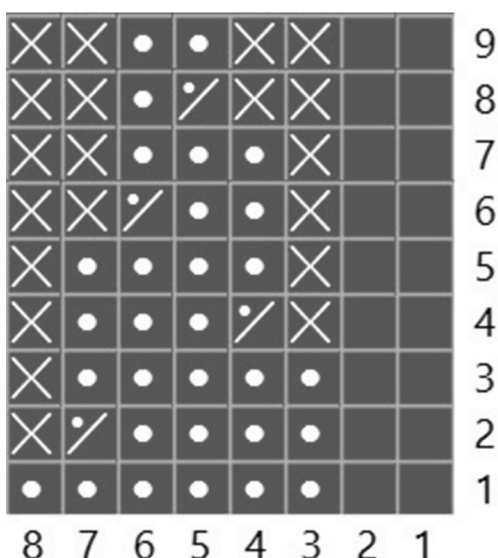
**Row 1:** k1 (red), k2 (white), k2 (red), k2 (white), k1 (red), repeat to end.

**Row 2 - 3:** k2 (red), k2 (white), repeat to end.

**Row 4 - 5:** k1 (white), k2 (red), k2 (white), k2 (red), k1 (white), repeat to end.

**Row 6 - 7:** k2 (white), k2 (red), repeat to end.

## CHART B



**Row 1:** k2, p6.

**Row 2:** k2, p4, p2tog.

**Row 3:** k2, p5.

**Row 4:** k2, p2tog, p3.

**Row 5:** k2, p4.


**Row 6:** k2, p2, p2tog.

**Row 7:** k2, p3.

**Row 8:** k2 p2tog, p1.


**Row 9:** k2, p2.

Key

 knit white

 knit red

 Purl

 p2tog

 no stitch

Copyright 2015, Tammy Canavan-Soldaat. This pattern and pictures are the property of Tammy Canavan-Soldaat. All rights reserved. Pattern is available for personal use only. No unauthorized reproduction, in whole or in part, or distribution of this pattern or content, including text or pictures is allowed. You may sell items made from this pattern but no commercial mass reproduction from this pattern is allowed without prior permission from the designer. Please give credit by linking back to <http://www.Canadutch.nl>.