

Candy Cane Wine Cozy



This Candy Cane Cozy is a quick and easy knit for all skill levels that can be whipped up just in time for Christmas! It makes a great addition to a gift for a friend or family member and can also be used to give your Christmas dinner table a bit of pizzazz!

Why show up to the party with a bottle of wine, when you can show up with a bottle decked out for the holidays in its very own festive cozy!

Materials

Scheepjes Invicta Extra in colours:
Colour A = 1545 (Red)
Colour B = 1357 (White)
Size 3mm Double Pointed Needles
Stitch Marker
Needle to weave in ends
Wine bottle

Gauge

30 stitches per 10cm in
stockinette stitch with 3mm

Measurements

Total length: 38cm
Body width (flat): 10cm
Neck ribbing length = 12cm

Pattern Notes

To be sure of gauge, it's advisable to stop knitting after the first few rows and slip your work onto the bottle. This will give you an idea of how tight a fit you have and if you need to go up or down a needle size. This is also important as bottles can also vary in size.

If you are new at knitting in the round or with double pointed needles, you may find it helpful to place a stitch marker on the work at the start of the row to keep track of where you are.

When carrying your yarn as you switch colours, don't pull too tightly, as this will cause the fabric to become stiff and puckered. Taught but not tight is best.

The top of this pattern also fits bottles with more sloped necks (for example, some white wine bottles), this requires that you knit the body of the cozy to a shorter length to allow for the neck to start earlier. You can check the length as you go by slipping the cozy onto the bottle.



Pattern

Cast on 72 with Colour A
Divide across four double pointed needles (18 sts each)

Body

Row 1: Knit

Row 2-5: k2, p2 rib around

Work **Chart A** for the candy cane pattern until piece measures 23cm (or the point where your bottle neck starts to get narrower) completing chart to end, finishing row 7.

Neck

Note: All k2tog decreases are worked with red yarn, you are decreasing to work away the white stitches.

Row 1: k1 (red), k1 (white), k2tog, repeat to end

Row 2-3: k2 (red), k1 (white), repeat to end

Row 4-5: k1 (white), k2 (red), repeat to end

Row 6-7: k1 (red), *k1 (white), k2 (red)*, repeat *...* around, k1 (red)

Row 8: (worked all in red): k1, k2tog, repeat around

Row 9: Knit (all stitches should now be red).

Work **Chart B** for ribbing decreases.

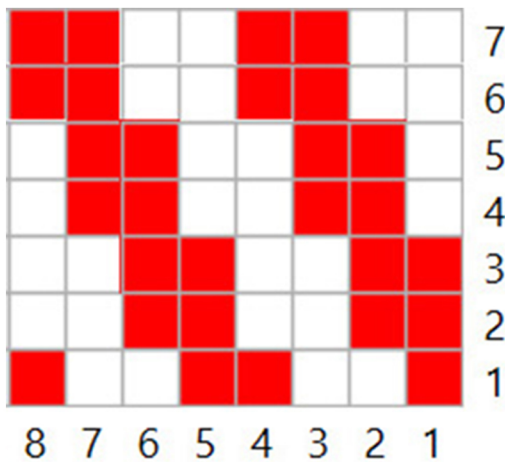
Work k2, p2 rib in red for 12 cm. Cast off and weave in ends.



Copyright 2015, Tammy Canavan-Soldaat. This pattern and pictures are the property of Tammy Canavan-Soldaat. All rights reserved. Pattern is available for personal use only. No unauthorized reproduction, in whole or in part, or distribution of this pattern or content, including text or pictures is allowed. You may sell items made from this pattern but no commercial mass reproduction from this pattern is allowed without prior permission from the designer. Please give credit by linking back to <http://www.Canadutch.nl>.

Note: When working charts in the round, always start in the bottom right corner and work each row from right to left.

Chart A



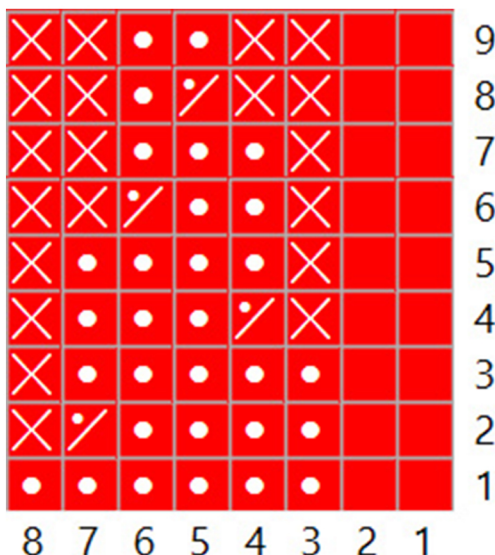
Row 1: k1 (red), k2 (white), k2 (red), k2 (white), k1 (red), repeat to end.

Row 2 - 3: k2 (red), k2 (white), repeat to end.

Row 4 - 5: k1 (white), k2 (red), k2 (white), k2 (red), k1 (white), repeat to end.

Row 6 - 7: k2 (white), k2 (red), repeat to end.

Chart B



Row 1: k2, p6.

Row 2: k2, p4, p2tog.

Row 3: k2, p5.

Row 4: k2, p2tog, p3.

Row 5: k2, p4.

Row 6: k2, p2, p2tog.

Row 7: k2, p3.

Row 8: k2 p2tog, p1.

Row 9: k2, p2.

Key

knit white

knit red

Purl

p2tog

no stitch